



### DESCRIPTION

- Sigma 2 combines mask goggle and chin guard to give you full face protection against splashes, droplets, dust and gases.
- Adjustable elastic strap for a secure fit and is designed for OTG comfort.
- PVC molded nose bridge.
- 5 base curve lens.
- Anti-scratch & anti-fog coating.

### EUROPEAN STANDARDS

EN ISO 16 321

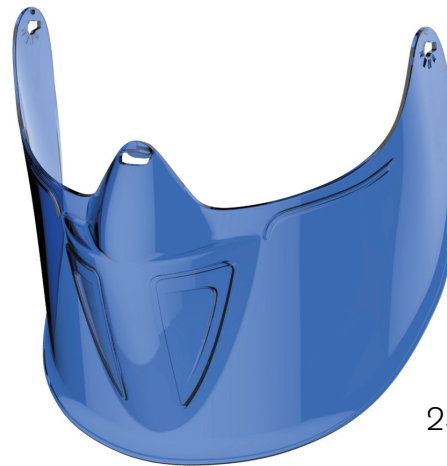
### TECHNICAL DATA

| LENS               |  |
|--------------------|--|
| TYPE               | Single   |
| MATERIAL           | Polycarbonate<br>99.99% UVA and UVB light absorption                                       |
| BASE CURVE         | 5  |
| FRAME              |  |
| MATERIAL           | Frame: PC   Strap: Elastic   |
| NOSE BRIDGE        | PVC  |
| PACKAGING          |  |
| PACKAGING          | Goggles: 5 pairs per box, 60 pairs per case<br>Visor: 4 pieces per box, 48 pieces per case |
| SINGLE PAIR WEIGHT | Goggles: 116g<br>Visor: 58g  |
| COUNTRY OF ORIGIN  | Taiwan   |

**SCOPE**<sup>®</sup>



251-G01-0021-EN



251-G01-000V-EN

| SKU             | FRAME COLOR | LENS COLOR & COATING           | LENS MARKING  | FRAME MARKING           |
|-----------------|-------------|--------------------------------|---------------|-------------------------|
| 251-G01-0021-EN | BLUE        | CLEAR / ANTI-SCRATCH, ANTI-FOG | P UL 1.2 DT 1 | 16321 P UL 1.2 DT 1-M 3 |
| 251-G01-000V-EN | BLUE        | BLUE / UNCOATED                | P UL 1.2 DT 1 | 16321 P UL 1.2 DT 1-M 3 |